

---

# Using MyKey

*MyKey is Clever-Stuff's new disgo tool that enables you to access and customise your disgo through the disgo console. Messages and prompts guide you through the short MyKey installation, use and customisation procedures, enabling you to make your disgo more personal, fun and easier to use. This document also includes some important frequently asked questions (FAQs). For the latest FAQs, please visit the disgo website (<http://www.mydisgo.com/>\_\_\_\_\_).*

















## 6 PERSONALIZING YOUR DISKONKEY

To personalize your DiskOnKey with your own icon, a special sound, or your own label, click the “Tools” button on the DiskOnKey console and select “Preferences” (Figure 4: MyKey Menu). The DiskOnKey Settings window (Figure 11: DiskOnKey Settings) is displayed.

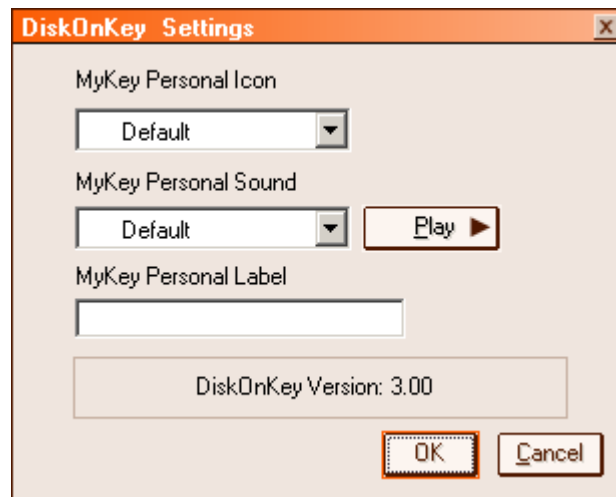


FIGURE 11: DISKONKEY SETTINGS

### 6.1 MyKey Personal Icon

To change the default icon, open the MyKey Personal Icon combo box and choose from these options:

- Select any of the ten icons included with MyKey.
- Select an icon file by browsing files that you have either created or want to download from the web.

Click “OK” to apply the change.

**Note:** This operation will fail if the DiskOnKey is write-protected.

### 6.2 MyKey Personal Sound

To change the default sound, open the MyKey Personal Sound combo box and choose from these options:

- Select any of the ten sounds included with MyKey.
- Select a different sound by browsing files that you have either created or want to download from the web. You can listen to any of the sounds you select by clicking “Play”. Click “OK” to apply the change.

**Note:** This operation will fail if the DiskOnKey is write-protected.

## 6.3 MyKey Personal Label

To personalize your DiskOnKey and simplify content identification, enter a personal label, such as your name or a category (up to 18 characters) to identify the contents of your DiskOnKey.

## 6.4 DiskOnKey Version

Your DiskOnKey version is the last item listed in the DiskOnKey Preferences window. You need this information when contacting Technical Support for help.

# 7 ADVANCED FEATURES

When MyKey is running, you can access a number of advanced features that make DiskOnKey easier to use. Click “Tools” and then click an option in the Advanced Features menu (Figure 12: Advanced Features Menu). This section describes these features.



FIGURE 12: ADVANCED FEATURES MENU

## 7.1 Login/Logout Privacy Zone

If you have created a Privacy Zone on your DiskOnKey using [KeySafe](#), you can login/layout of this zone easily by providing the correct password in the Login Privacy Zone window (Figure 13: Login Privacy Zone Window). After a fifth unsuccessful attempt to login, Safe Eject your DiskOnKey, reinsert it in your tray, verify your password and try logging in again.

After you have successfully logged into your Privacy Zone, the text in the window changes to Logout Privacy Zone. To logout, just click this option in the Advanced Features menu.

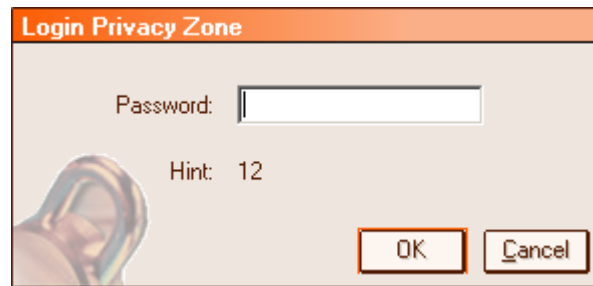


FIGURE 13: LOGIN PRIVACY ZONE WINDOW

## 7.2 Enable/Disable Write Protection<sup>1</sup>

To protect your DiskOnKey from viruses or data loss when plugging it into a computer whose security and integration are questionable, MyKey enables you to write-protect your DiskOnKey. This prevents protected files from being deleted, created or modified.

## 7.3 Synchronization Options

MyKey synchronization options speed up and simplify the process of synchronizing your work between two or more computers, or simply backing up files. Available synchronization options include:

- Folder: This option synchronizes all folders and sub-folders.
- My Favorites: This option synchronizes your My Favorites folder on your computer and your DiskOnKey Favorites folder on your DiskOnKey.
- My Documents: This option synchronizes your My Documents folder on your computer and your DiskOnKey Documents folder on your DiskOnKey.

### 7.3.1 First-Time Folder Use

To enable folder synchronization for first-time use, proceed as follows:

1. Select “Synchronize Folders” from the MyKey Console Tools menu. The first time you use the synchronization feature on a new computer or with a new DiskOnKey, the Synchronization Settings window (Figure 14: Select Folders to Synchronize) is displayed.
2. Select the folders you would like to synchronize. The first folder must be an existing local folder. The second folder must be an existing DiskOnKey folder.

**Note:** If identical files exist in both your local and DiskOnKey folders the first time you attempt to synchronize them, MyKey will not know which file is the most up-to-date version. Therefore, make sure to assign different names.

3. Click “OK” to start the synchronization process, or “Cancel” to exit.

---

<sup>1</sup> Supported on DiskOnKey version 3.04 and higher.

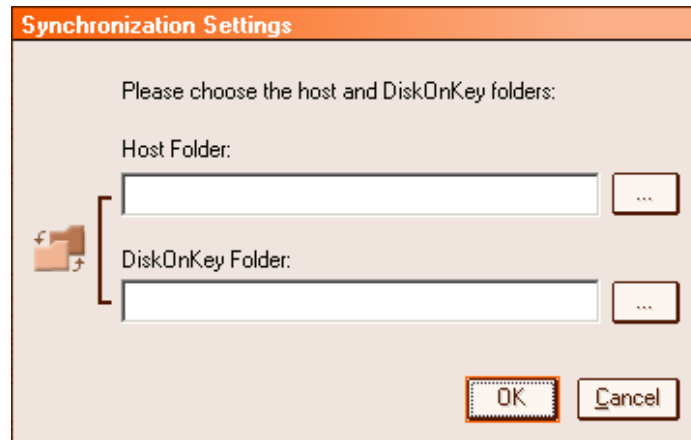


FIGURE 14: SELECT FOLDERS TO SYNCHRONIZE

### 7.3.2 Subsequent Folder Use

After you have selected the folders to synchronize, proceed as follows:

1. Select “Synchronize Folders” from the MyKey Console Tools menu. This opens the Synchronization Details window. A list of the required actions, awaiting your approval, is displayed (Figure 15: Synchronize Actions).
2. Click “Settings” to access/change the displayed settings.
3. Click “Synchronize” to authorize all file operations (you cannot select a partial list).

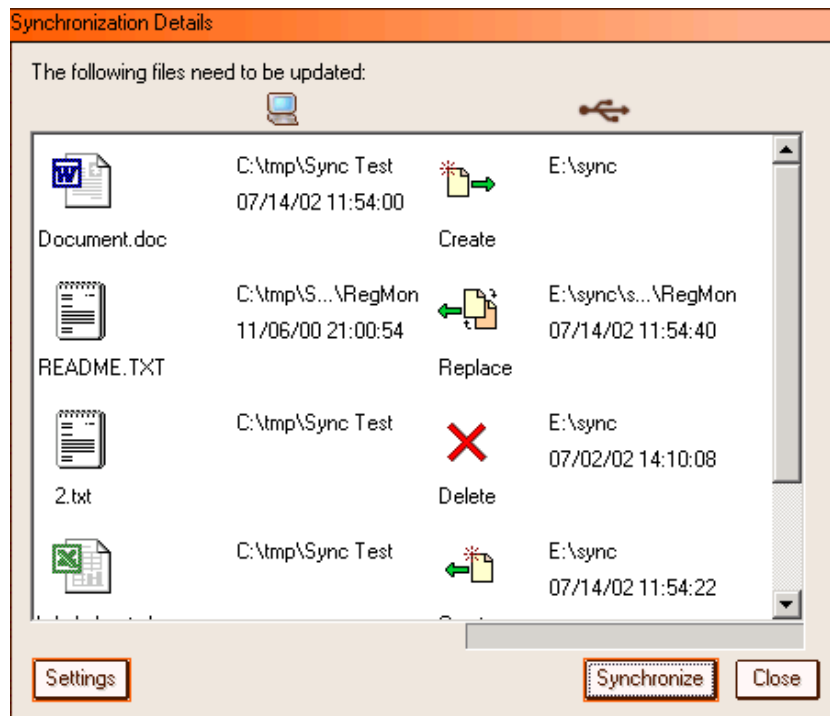


FIGURE 15: SYNCHRONIZE ACTIONS

4. If an error occurs during a file operation (e.g. disk is full, bad path or file), an error message is displayed. Click “OK” to continue synchronizing the remaining files, or “Cancel” to stop the process.
5. Click “OK” when a message is displayed indicating synchronization completion.

### 7.3.3 Folder Synchronization Rules

The following rules apply to the synchronization process.

- New file: If a new file is created in any folder, MyKey enables you to create the same file in the other folder/s.
- Deleted file: If a file was deleted in any folder, MyKey enables you to delete the file in the other folder/s.
- Modified file: If a file was modified in any folder, MyKey enables you to replace the file in the other folder/s. If the file was modified in all folders, MyKey enables you to skip this file without performing any operation.
- Renamed file: Renaming a file is equivalent to deleting it and creating a new one. Therefore, the rules for “Deleted file” apply.

## 7.4 Create Personal Folders

Personal folders are file folders that help you to categorize/organize your files for quick retrieval. To create a personal folder, proceed as follows:

1. Click “OK” to confirm personal folder creation (Figure 16: Create Personal Folders Confirmation).

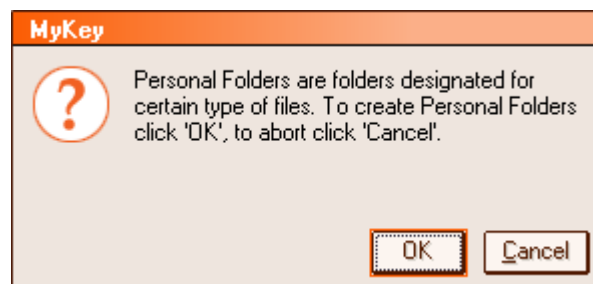


FIGURE 16: CREATE PERSONAL FOLDERS CONFIRMATION

The following directories are created:

- My DiskOnKey, similar to your Desktop, stores general files that you access frequently.
- DiskOnKey Documents, similar to your My Documents folder, stores work files. This folder stores files from the Synchronize My Documents operation.
- DiskOnKey Favorites, similar to your Favorites folder, stored your favorites. This folder stores files from the Synchronize My Favorites operation.

2. To access any files in your personal folders, you can either:
  - Open your My Profile folder from Windows Explorer.
  - Click “Tools” on the DiskOnKey Console to display and access files (Figure 17: Quick Access to Personal Folders).



FIGURE 17: QUICK ACCESS TO PERSONAL FOLDERS

## 8 ADDITIONAL FEATURES

### 8.1 Send to DiskOnKey Drive

Your designated DiskOnKey drive is automatically added to the Send To menu, enabling you to right click a file and save it on your DiskOnKey drive (Figure 18: Send To Menu).

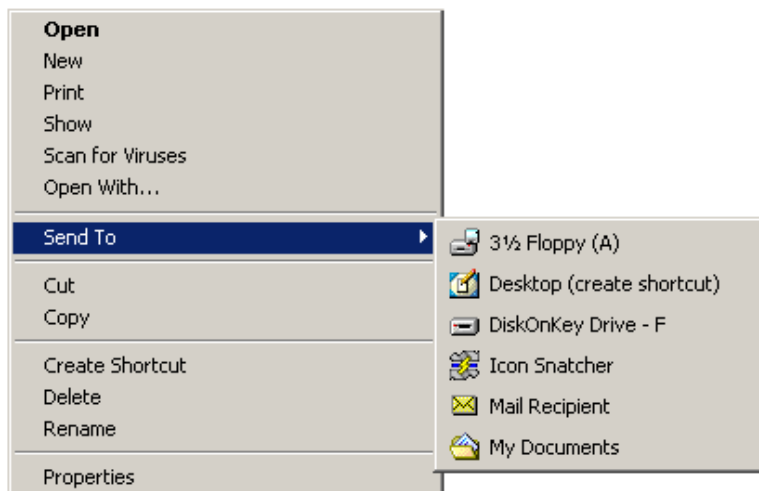


FIGURE 18: SEND TO MENU

## 8.2 Autorun

The MyKey autorun function enables a wide variety of files, such as HTML web pages, to be launched automatically when insert your DiskOnKey into the USB port of a computer.

MyKey runs and executes the DiskOnKey autorun.ini file. You can disable this feature from the MyKey Settings dialog box. The MyKey autorun syntax is slightly different and more extensive than CD-ROM autorun syntax.

A typical autorun.inf file contains two lines in text format (ASCII) to launch the file start.htm. For example, the syntax of the autorun.inf file that launches the DiskOnKey web page would be:

```
[launcher]
open=www.diskonkey.com
```

As another example, the syntax of the autorun.inf file that launches the Windows calculator (calc.exe) would be:

```
[launcher]
open=calc.exe
```

## 9 TROUBLESHOOTING

MyKey displays a number of messages with guidelines for troubleshooting, where possible, as follows:

- **Fatal error**  
A general error message indicates that a fatal error has occurred from which the application cannot recover.
- **Windows version not supported**  
A message is displayed if you try to run MyKey on a version of Windows not supported. (See Section 1.1 for system requirements.)
- **No administrative privileges**  
The application terminates if you attempt to run MyKey on a computer where you do not have administrative privileges.
- **Large fonts**  
MyKey is designed to use small fonts, and may not provide optimal display viewing if you use large fonts. To switch to small fonts, open your control panel, and select this sequence:  
Display Properties→Settings→Advanced→Font Size.
- **Unable to connect to DiskOnKey**  
This message indicates that MyKey was unsuccessful in obtaining information from your DiskOnKey such as version number, capacity, your personal settings, etc.
- **Unable to eject DiskOnKey**  
This message usually indicates that you have not closed all applications and/or files on your DiskOnKey before trying to remove it. Close any open application and/or file, and then try again to remove your DiskOnKey.

## 10 FAQs

A few of the most frequently asked questions are listed below. For a complete listing of the latest FAQs, go to the DiskOnKey website <http://www.diskonkey.com/> and choose “Support”.

**Q:** How can I find out if my DiskOnKey supports MyKey?

**A:** Just look at the neck of your DiskOnKey. It supports KeySafe if the neck: Has a serial number that ends in "DXX" and is gray (8MB), yellow (16MB), orange (32MB), light blue (64MB), green (128MB), translucent purple (256MB), or translucent green (512MB)

**Q:** How do I check which version of MyKey I’m using?

**A:** The simplest way is to right click the MyKey tray icon, and then click “About”.

**Q:** How do I upgrade MyKey to the newest version?

**A:** Right click the MyKey tray icon and select “Check for newer version”. Follow the instructions to download the latest version.

**Q:** Can I use MyKey with more than one DiskOnKey on my computer?

**A:** Yes.

**Q:** Why can I use MyKey only on certain computers?

**A:** You can only use MyKey on computers for which you have administrative privileges.

**Q:** Why can’t I copy files to my DiskOnKey?

**A:** Your DiskOnKey may be write-protected or you may not have enough free disk space. If your DiskOnKey is write-protected, you will see the Write Protection logo on the LCD display of your MyKey Console.

**Q:** How can I restore my DiskOnKey Console after I close it?

**A:** Double click or right click your MyKey tray icon and select “Show”.

## How to Contact Us

**Website:**

<http://www.m-sys.com>  
<http://www.diskonkey.com>

**General Information:**

[info@m-sys.com](mailto:info@m-sys.com)

**Technical Information:**

[techsupport@m-sys.com](mailto:techsupport@m-sys.com)

**USA**

M-Systems Inc.  
8371 Central Ave, Suite A  
Newark CA 94560  
Phone: +1-510-494-2090  
Fax: +1-510-494-5545

**China**

M-Systems China Ltd.  
25A International Business Commercial Bldg.  
Nanhu Rd., Lou Hu District  
Shenzhen, China 518001  
Phone: +86-755-2519-4732  
Fax: +86-755-2519-4729

**Taiwan**

M-Systems Asia Ltd.  
Room B, 13 F, No. 133 Sec. 3  
Min Sheng East Road  
Taipei, Taiwan R.O.C.  
Phone: +886-2-8770-6226  
Fax: +886-2-8770-6295

**Europe and Israel**

M-Systems Ltd.  
7 Atir Yeda St.  
Kfar Saba 44425, Israel  
Phone: +972-9-764-5000  
Fax: +972-3-548-8666

**Japan**

M-Systems Japan Inc.  
Asahi Seimei Gotanda Bldg., 3F  
5-25-16 Higashi-Gotanda  
Shinagawa-ku Tokyo, 141-0022  
Phone: +81-3-5423-8101  
Fax: +81-3-5423-8102

© 2002 M-Systems Flash Disk Pioneers, Ltd. All rights reserved.

This document is for information use only and is subject to change without prior notice. M-Systems Flash Disk Pioneers Ltd. assumes no responsibility for any errors that may appear in this document. No part of this document may be reproduced, transmitted, transcribed, stored in a retrievable manner or translated into any language or computer language, in any form or by any means, electronic, mechanical, magnetic, optical, chemical, manual or otherwise, without prior written consent of M-Systems.

M-Systems products are not warranted to operate without failure. Accordingly, in any use of the Product in life support systems or other applications where failure could cause injury or loss of life, the Product should only be incorporated in systems designed with appropriate and sufficient redundancy or backup features.

Contact your local M-Systems sales office or distributor, or visit our website at [www.m-sys.com](http://www.m-sys.com) to obtain the latest specifications before placing your order.

DiskOnChip®, DiskOnChip Millennium®, DiskOnKey® and TrueFFS® are registered trademarks of M-Systems. FFD™ and SuperMAP™ are trademarks of M-Systems. Other product names mentioned in this document may be trademarks or registered trademarks of their respective owners and are hereby acknowledged.