



Tablet 7900

Android 2.2

10.1" Touch screen

User Manual

Thank you for choosing the disgo Tablet 7900.

The Tablet 7900 is fully equipped to offer you the complete browsing and multimedia experience.

- 10.1" resistive touch screen with 1024 x 600 resolution
- Built-in web cam with still image and video recording
- 3D Motion Sensor for automatic orientation
- Dual MicroSD and USB for added connectivity
- HD video playback

IMPORTANT

- 1) Please charge the Tablet 7900 continuously for 4 hours before use. For further details on charging the device, please see section 2.3.
- 2) For information on inserting/removing the Micro SD card, please refer to section 4 – Using Micro SD card. Failure to do so may result in damage to the memory card.
- 3) Some applications run in a full screen mode. The icons on the toolbar will not be displayed. Please use the back button on the tablet to display the menu options.

Contents

1. Accessories
2. Getting Started
 - 2.1 Appearance
 - 2.2 Using the tablet
 - 2.3 Charging the tablet
 - 2.4 Toolbar
 - 2.5 Manage your desktop
 - 2.6 Using basic applications
3. Settings
 - 3.1 Wireless & networks
 - 3.2 Ethernet Configuration
 - 3.3 Sound & display
 - 3.4 Location & security
 - 3.5 Applications
 - 3.6 Accounts & sync.
 - 3.7 Privacy
 - 3.8 SD card & device storage
 - 3.9 Search
 - 3.10 Language & keyboard
 - 3.11 Date & time
 - 3.12 Touch screen calibrate

3.13 Upgrade system

3.14 About Device

4. Using MicroSD Card

5. Using HDMI

6. Technical features

7. Recycling

8. Troubleshooting

9. Battery Statement

1. Accessories

Inside the *disgo Tablet 7900* packaging, you will find:

1 x 10.1" Tablet

1 x dual-power adapter

1 x User manual

1x 2GB MicroSD card (Inserted into 'SD1')

2. Getting started

2.1 Appearance

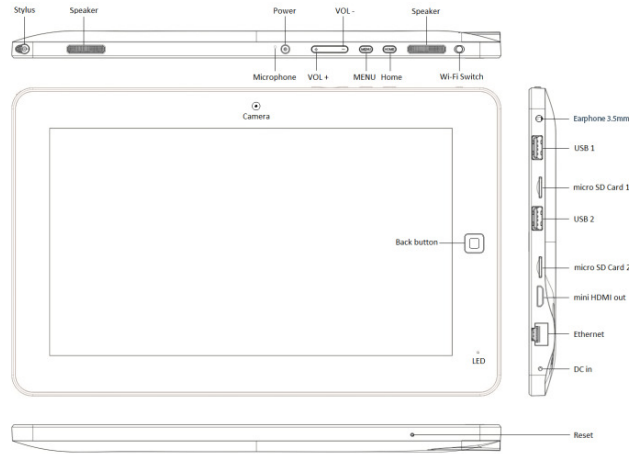


Fig 2.1

Button descriptions

Power On/Off	When the tablet is switched off, press and hold this button to turn it on. To power off the tablet, press and hold this button to activate the shut-down window.
VOL +	Increase the volume.
VOL -	Decrease the volume.
Menu	Several options are listed in this Menu. Press this button to display the menu bar.
Home	Returns user to desktop
Wi-Fi Switch	Activate/deactivate Wi-Fi connection
Back	Returns user to previous screen
Reset	Use this button to force a shutdown of the device. If the device freezes it may require a reset.

2.2 Using the tablet

- Press and hold the Power button for 2 seconds in order to turn on the device.

- When the tablet is turned on for the first time, you will need to calibrate the touch screen. Please follow the procedures on the screen to complete this process.
- To use the pre-installed apps, simply touch the relevant icon.
- Pressing the Power button will activate/deactivate sleep mode when the device is turned on.
- Press and hold the Power button to activate the power-off screen.

The widget desktop (Fig 2.2.1).



The applications desktop (Fig 2.2.2).



2.3 Charging the tablet

Plug the adapter to the mains and the DC connector into the DC-in jack as shown in figure 2.1. A full charge takes up to 4 hours. When charging the tablet, the LED indicator will be red.

2.4 Toolbar.

(See Fig 2.4 for more information)

Home	Touch the <i>Home</i> icon to return to the desktop. This action will not close the applications that are open.
SD card indicator	Displays the status of the MicroSD card upon insertion or removal. Please refer to details in section 4.
Wi-Fi indicator	Displays the connection status of the Wi-Fi.
Battery indicator	Shows the charge status of the battery
Time	Shows current time.
Vol. -	Decreases volume.
Vol. +	Increases volume.
Menu	Shows application options on the bottom of the screen.
Back	Returns to previously viewed screen

Fig 2.4



2.5 Manage your desktop

- Press the *Home* icon on the top left of your toolbar to return to the main desktop.
- In order to delete an icon or widget from the desktop, touch and hold the icon / widget until the dustbin icon appears on the right side of the screen. Drag the icon / widget onto the

dustbin until the icon / widget turns red.
Release the icon / widget to delete.

Note: The items being deleted are shortcuts only and are not actual applications. These applications can be accessed again by creating a new shortcut.

To reinsert a new or previously deleted icon / widget onto the current desktop, click *Menu* and choose *Add Application/Widget*.

2.6 Using basic applications

My Device is a user friendly application that provides basic file directory operations.

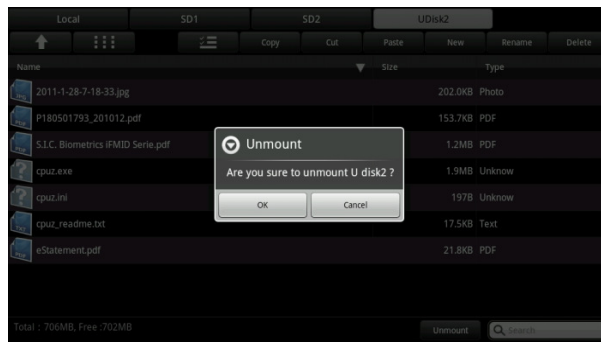


Fig. 2.6.1

Local/SD1/SD2/ UDisk1/UDisk2	This tab indicates which file system directory you are using.
Back	Returns to parent directory.
Grid/List view	Switches between grid and list view of the current directory.
Select/Unselect	To access a file, double tap the selected file. You can also use this icon to unselect a file.
Copy	Copy the selected file.
Cut	Remove the selected file.
Paste	Paste the copied or cut file to current location.
New	Create new folder.

Rename	Rename a file or folder.
Delete	Delete a file or folder.
Unmount	Unmounts external flash devices. Please remember to unmount the flash drives before physically removing them. Improper removal of the flash drives may cause data loss. Please refer to details in section 4

E-Mail

The system will try to automatically setup the Google Gmail account servers for the chosen Gmail logins. It is also possible to setup a mail account manually. Please refer to your email provider for details on how to setup up your account manually.

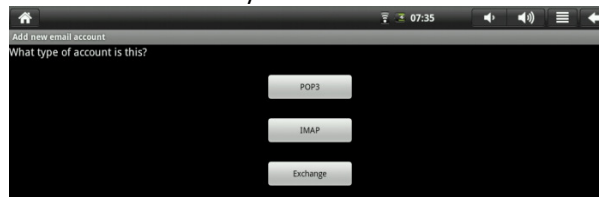


Fig. 2.6.2

Gallery

The gallery allows you to view media files stored on the device as well as external memory devices connected to the tablet.

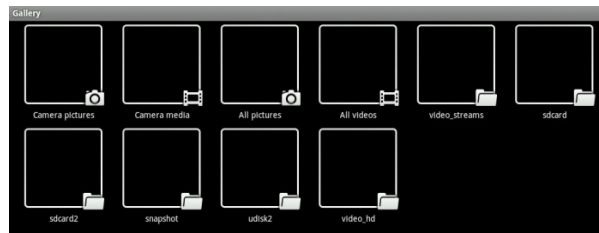


Fig. 2.6.3

Music

The Music application allows you to view and playback your music collection. Please note that music will be played in the background even if the back button is pressed. This allows the user to listen to music while reading an e-Book for example.

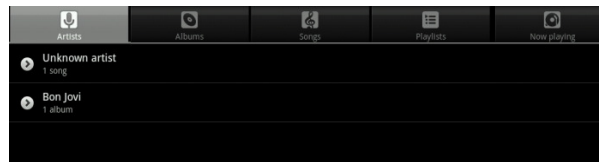


Fig. 2.6.4

Sound Recorder

The sound recorder can be used as a Dictaphone and recordings are saved to the MicroSD card.

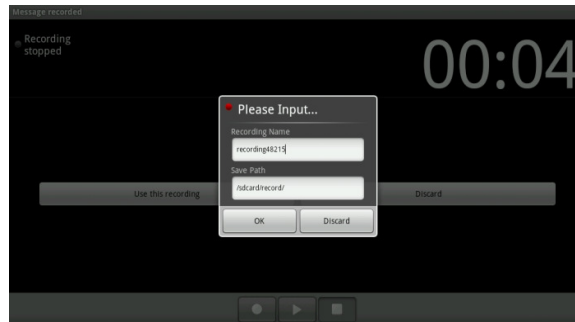


Fig. 2.6.5

Camera

There are two camera modes; Snapshot mode, giving still images and video recording mode.

The images and video files are saved to the MicroSD card.

3. Settings


Touch the *Settings* icon  to enter this menu.



Fig. 3.0

3.1 Wireless & networks

Wi-Fi Turn Wi-Fi function On/Off
Wi-Fi settings By enabling *Network*

notification, a list of all available connections will be shown. Choose *Menu* to enter advanced options.

IMPORTANT

- Upon exiting the *Advanced* page, press *Menu* → *Save* to save all changes.
- If a network requires a password /wireless key, the tablet will automatically detect the encryption details and will request that you enter the key.

3.2 Ethernet Configuration

Ethernet	Switch on Ethernet functionality
----------	----------------------------------

3.3 Sound & display

Silent mode	Turn mute option On/Off
Media volume	Adjusts the volume for music and videos
Audible selection	Play sound for screen selection.
Haptic feedback	Turn On/Off Vibrate feature. Disable this function to save battery life.
SD card	Play sound for Micro SD card

notifications	notifications. This function is application dependent.
Orientation	Enable/disable automatic orientation mode. If disabled, the manual orientation icon will appear on top left beside the Home icon.
Animation	Selects page change effects; fade, etc.
Brightness	Adjusts the brightness of the screen.
Screen timeout	Adjusts the delay before the screen goes into standby.

3.4 Location & security

Using wireless networks	Please be aware of applications (such as Maps) which access the wireless network. If you wish to use these applications, please accept the onscreen agreement.
Visible passwords	Password characters will be shown when you are typing. Only the last character will be visible, others will be masked.

3.5 Applications

Unknown sources	Allows installation of non-SlideMe Market applications. Please read any agreement upon downloading.
Manage applications	Manage and remove installed applications. Please note that some applications may cause the system to freeze during installation or removal. This is due to a memory handling issue of the application and the device. It is suggested to clear the cache before removing the application. The "Clear Cache" option is located in the 'Remove application' page. If the system freezes while installing or removing, please press the reset key on the side of the tablet in order to reset the device.
Running services	View and control applications which are currently running.

3.6 Accounts & sync

Add account You may add your Gmail account and synchronize the account in the Google server. For Google server details please use *m.google.com*.

3.7 Privacy

Use My Location This will enable the Google main search page to be set to your current location (country).

Factory data reset This erases all data to factory default. Powering on the tablet will take longer after a reset. All applications installed and personal settings will be erased. Please acknowledge all warnings when resetting.

3.8 SD card & device storage

Available space Shows available space of Micro SD card / tablet.

Unmount SD card This option is used for safe removal of the Micro SD card. Please see Section 4 – ‘Using Micro SD card’ for further information.

3.9 Search

Google search settings	Shows suggestions from Google as you type.
Searchable items	Choose what to search on the device.
Clear search shortcuts	Clear history of recently chosen search results.

3.10 Language & keyboard

Select locale	Select language and region.
Android keyboard	Onscreen keyboard settings.
User dictionary	Add and remove words from user dictionary. You can add words by pressing the “Menu” icon.

3.11 Date & time

Automatic	Automatically synchronize the date time with your AP.
Set date	Set date on device.
Select time zone	Select time zone on device
Set time	Set time on device.
Use 24-hour format	Use 24-hour format or am / pm mode.
Select date format	Select date display options

3.12 Touch screen calibration

Performs touch panel calibration.

3.13 G-sensor calibration

Performs calibration on G-Sensor functionality.

3.14 About Device

Displays device information.

4. Using MicroSD card

In order to safely remove the storage card from the device go to Settings → SD card & device storage. Choose 'Unmount MicroSD card' for safe removal of the card.

The toolbar will display *MicroSD card safe to remove* when this option is chosen. Please wait 3 seconds before removing the card.

When the MicroSD card is removed, the toolbar will display *Removed MicroSD card*.

Re-inserting the MicroSD card will show *Preparing MicroSD card* on the toolbar status.

Removing MicroSD card without first unmounting will give the following message *MicroSD card unexpectedly removed* on the toolbar.

You may also remove your MicroSD card by touching the *unmount* button in *My Device*.

IMPORTANT Any unexpected removal may cause the MicroSD card to fail. You will have to reboot the device in order for the MicroSD card slot to work again. Removing the MicroSD card without unmounting may damage the card.

Please also refer to 3.8 *MicroSD card & device storage*.

5. Using HDMI

The HDMI output can be used when playing videos. A HDMI cable can be connected between the Tablet and a HD TV for full-screen viewing. Press the Menu button on the back of the tablet to project the video onto the desired screen.

6. Technical features

Main Unit

Model No.: Disgo Tablet 7900.

CPU: iMAP 210 @ 1GHz.

Flash Memory: 2 GB NAND flash.

System Memory: DDRII 256MB

Display: 1024 x 600
Touch Panel: Resistive Multi-Touch
Battery: Li-Polymer 3800 mAh
Operating Temperature: 0 - 55 °C.

7. Recycling



This crossed bin symbol on the appliance indicates that the product, at the end of its life, must be disposed of separately from domestic waste, either by taking it to a separate waste disposal site for electric and electronic appliance or by returning it to your dealer when you buy another similar appliance. The user is responsible for taking the appliance to a special waste disposal site at the end of its life. If the disused appliance is collected correctly as separate waste, it can be recycled, treated and disposed of ecologically; this avoids a negative impact on both the environment and health, and contributes towards the recycling of the product's materials. For further information regarding the waste disposal service available, contact your local waste disposal agency or the place of purchase.

8. Troubleshooting

8.1 I cannot connect to the Internet using Manual Setup.

Ans: Ensure you have used *Menu* → *Save* when exiting the advanced settings page.

8.2 I can see my access point name, but I cannot connect to the Internet.

Ans: If your access point (AP) supports multiple access points at a time, you may have to connect the device using WPA encryption and not WEP. Please refer to your AP device manual for setup details.

8.3 My MicroSD card is not being detected and/or shows *damaged SD card*.

Ans: Please re-insert the MicroSD card and try again. If this does not work, please restart the device again with MicroSD card inserted. Please ensure that you have removed the MicroSD card using the correct procedure as described in section 4.

8.4 My system freezes when installing / removing applications.

Ans: This may be caused by a memory handling error. Use Clear Cache option (See section 3.5) and Force Close icon in application manager before removing the software. If the system continues to freeze, please press the reset button on the side of the device and power-on again.

8.5 My device freezes while powering-on.

Ans: This may be caused by a failure in reading the MicroSD card. Please press the reset button and power-on again. Also, please ensure that the card is fully inserted. Alternatively, please try to start the device with the MicroSD card removed.

8.6 Can I manually change the screen orientation?

Ans: Yes. Please check in "*Sound & Display*" in "*Settings*". Un-check the "*Orientation*" option, which will enable the manual orientation button on the tool bar.

8.7 The device showed an error message and the application closed: "android.process.acore" fault.

Ans: This happens when the system has too many

applications running at once. Please check your open applications as noted in section 3.

8.8 What is the life of the battery?

Ans: A complete charge will give 4 hours battery life with wireless functionality turned on.

8.9 Can I update my tablet?

Ans: The "Upgrade System" in "Settings" will allow you to update your tablet when new versions of firmware or Operating Systems become available. All new updates/versions will be announced on the "My Disgo" website; www.mydisgo.com

8.10 Can I amend the Operating System or code on the device myself?

Ans: No. Any misuse of the tablet in this way will void the warranty.

8.11 I have my MicroSD card inserted, but I am unable to use applications that require a MicroSD card.

Ans: The device checks the first MicroSD card slot (SD1) as the default slot. Please insert the MicroSD card to the first slot (SD1) when using the

voice recording, camera image, and applications such as SlideMe.

8.12 The touch-screen is not very responsive

Ans: As the touch-screen is resistive, please use the stylus provided for best results.

For further technical queries, please contact the
mydisgo support helpdesk @
www.mydisgo.com/support

9. Battery statement



CMS Peripherals Limited is registered as a producer under The Waste Batteries and Accumulator Regulations 2009. The battery in this device is not intended to be removed by the individual or end user. At the end of the product life, or the expiry of the product, the relevant local council appointed WEEE disposal and recycling facility should consult the aforementioned company using the details at the footer of this page should advice be sought for the safe disposal of the cell within this product.

The cell within this product uses Lithium Ion technology. The cell has a voltage rating of 8.4v and a capacity of 3800mAh, with an energy rating of 31.9Wh (Watt hours)

CMS Peripherals Limited, 24 Scrubs Lane, London, NW10

6RA



Warning: To reduce the risk of fire and burns; do not disassemble, crush, puncture, short external contacts, or dispose of in fire or water.